

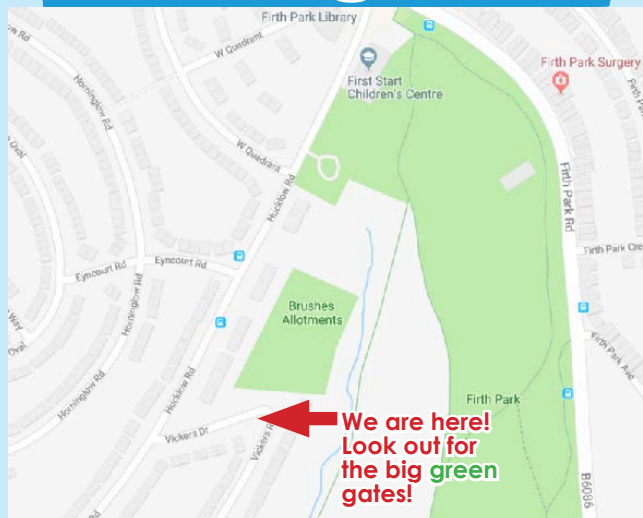
Our Site

We offer a wide range of activities including:

- Food growing
- Family sessions
- Using your DIY skills
- Gardening
- Cook and Eat sessions
- Playschemes
- Childminder support
- Environmental crafts
- Open days/site tours
- School & community group visits
- Women's construction courses
- Wildlife watching



Getting here



We can be found where Vickers Drive meets Vickers Road - look for the big green gates

By car: S5 6TG or S5 6WB

By bus: The following buses stop a short walk away from the allotment: 1, 3, 5, 11, 11a, 32 and 88

Connect with us on social media

Facebook: Firth Park Community Allotment

Twitter: @FirthParkAllot

Instagram: firthparkcommunityallotment

You can also find information on us on the Heeley City Farm website.

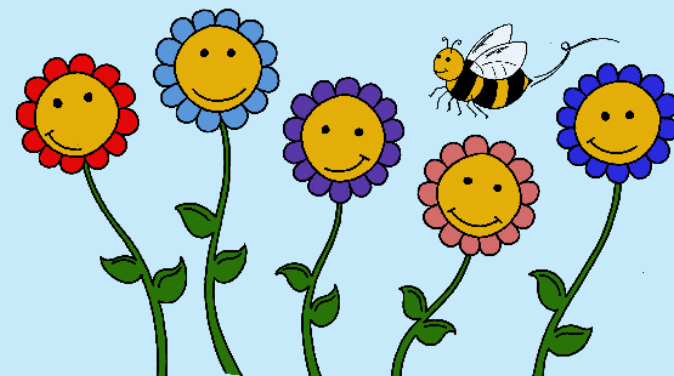
Visit www.heeleyfarm.org.uk and go to the Firth Park Community Allotment page

For more information on
Firth Park Community Allotments contact;
Dot Rodman on **07985421346**

or

dotrodman@heeleyfarm.org.uk

Firth Park Community Allotment



**A Heeley City FARM
Local Food
Growing
Project**



Potted history

The award-winning Firth Park Community Allotment was established at the brushes allotment site in 2005 by Firth Park Surestart and Heeley City Farm to demonstrate how local families and children could learn to grow their own food.

Our family friendly site provides fruit trees and bushes, raised beds, a wide range of seasonal crops, a poly tunnel, kitchen facilities, wildlife areas and ponds - to name but a few!

Our hard work has not gone unnoticed and our accolades in 2020 included:

- Maintaining our Green Flag status for 8 years
- Recieveing an 'Outstanding' from RHS Yorkshire In Bloom for the last 2 years

Friends of Firth Park Community Allotment

We now have a 'Friends of Firth Park Community Allotment' group which has just become a registered charity.

Adult Volunteers

Our volunteers are essential in maintaining our plots. We are always keen for people to join our team. If you are interested in meeting new people, getting some exercise, sharing skills and learning new ones in our stunning community plots

Contact Dot to book a site visit and discuss options



Family Playschemes

We run Thursday sessions 1pm till 3pm in most school holidays where older children can join in the fun.

Details on our Facebook page or phone Dot on 07985421346

Veg Patch Kids

Monday 10am - 12pm
Thursday 1pm - 3pm
(Term-time only)

We welcome children of all ages to one or both our weekly sessions. We kindly request a minimum donation of £1 per child per session and an additional contribution if taking home produce from the allotment.

Our aim is to enable children to understand how food is grown, instil a love of the outdoors and provide opportunities for them to connect with nature, whilst bringing families and communities together.

We have on site:

- Various digging beds
- Mud kitchen
- Outdoor reading den
- Sand and water trays
- Sheltered patio area

The allotment is a great place for children to indulge in some good old-fashioned messy play! Families are encouraged to participate in:

- Sowing seeds
- weeding
- watering
- digging
- planting
- litter picking
- harvesting fruit and veg for snack time

Sessions are ended with a healthy snack and, wherever possible, families are given produce from the allotment to take home.

For convenience of families of young children we also have the follow provisions:

- Portaloo
- Pram store
- Sheltered patio area for mothers wanting to breastfeed
- Nappy changing mat

Veg Patch Kids

